



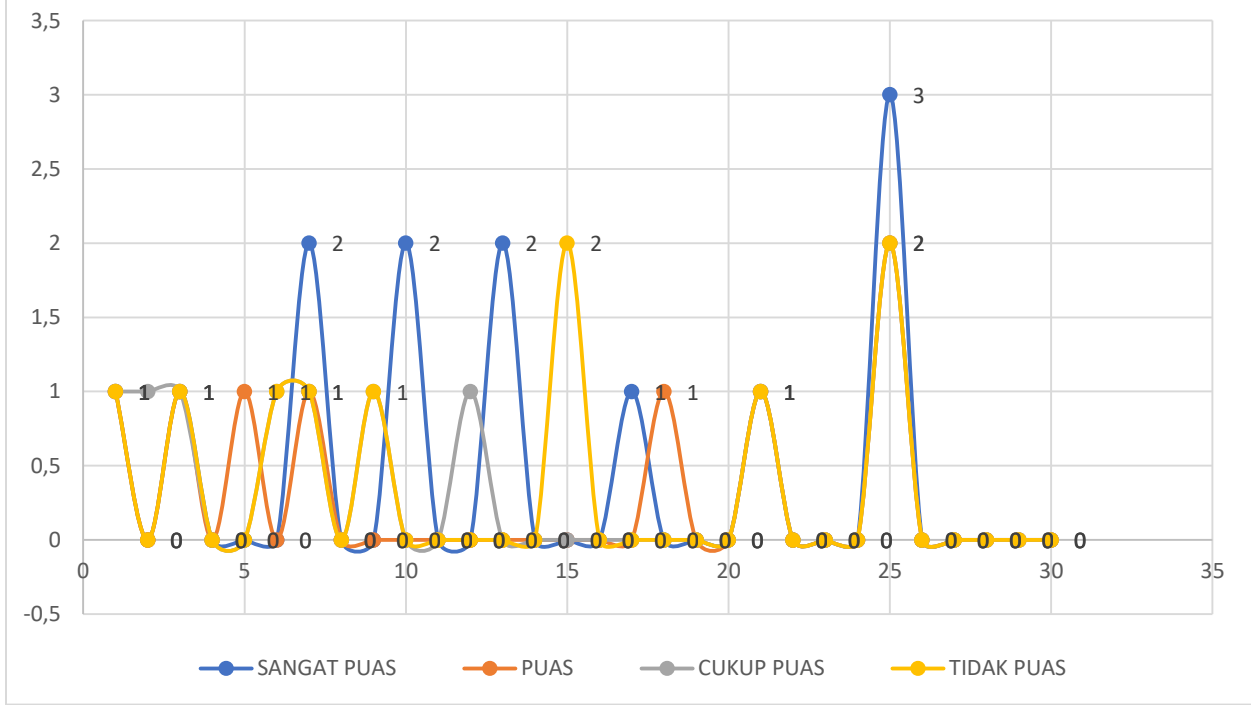
PENGADILAN TINGGI PALANGKA RAYA

JL. RTA MILONO NO. 9 TELP. 3221853 – 3221854 FAX. 3221854
Website : <http://www.pt-palangkaraya.go.id>, e-mail : pt_palangkaraya@yahoo.co.id
PALANGKA RAYA – KALIMANTAN TENGAH

LAPORAN SURVEI HARIAN MEJA INFORMASI BULAN MEI TAHUN 2021

No.	Hari	Tanggal	FREKUENSI							
			SANGAT PUAS	%	PUAS	%	CUKUP PUAS	%	TIDAK PUAS	%
1	Sabtu	1 Mei 2021	1	25%	1	25%	1	25%	1	25%
2	Minggu	2 Mei 2021	0	0%	0	0%	1	100%	0	0%
3	Senin	3 Mei 2021	1	25%	1	25%	1	25%	1	25%
4	Selasa	4 Mei 2021	0	0%	0	0%	0	0%	0	0%
5	Rabu	5 Mei 2021	0	0%	1	100%	0	0%	0	0%
6	Kamis	6 Mei 2021	0	0%	0	0%	1	50%	1	50%
7	Jumat	7 Mei 2021	2	40%	1	20%	1	20%	1	20%
8	Sabtu	8 Mei 2021	0	0%	0	0%	0	0%	0	0%
9	Minggu	9 Mei 2021	0	0%	0	0%	1	50%	1	50%
10	Senin	10 Mei 2021	2	100%	0	0%	0	0%	0	0%
11	Selasa	11 Mei 2021	0	0%	0	0%	0	0%	0	0%
12	Rabu	12 Mei 2021	0	0%	0	0%	1	100%	0	0%
13	Kamis	13 Mei 2021	2	100%	0	0%	0	0%	0	0%
14	Jumat	14 Mei 2021	0	0%	0	0%	0	0%	0	0%
15	Sabtu	15 Mei 2021	0	0%	0	0%	0	0%	2	100%
16	Minggu	16 Mei 2021	0	0%	0	0%	0	0%	0	0%
17	Senin	17 Mei 2021	1	100%	0	0%	0	0%	0	0%
18	Selasa	18 Mei 2021	0	0%	1	100%	0	0%	0	0%
19	Rabu	19 Mei 2021	0	0%	0	0%	0	0%	0	0%
20	Kamis	20 Mei 2021	0	0%	0	0%	0	0%	0	0%
21	Jumat	21 Mei 2021	1	25%	1	25%	1	25%	1	25%
22	Sabtu	22 Mei 2021	0	0%	0	0%	0	0%	0	0%
23	Minggu	23 Mei 2021	0	0%	0	0%	0	0%	0	0%
24	Senin	24 Mei 2021	0	0%	0	0%	0	0%	0	0%
25	Selasa	25 Mei 2021	3	33%	2	22%	2	22%	2	22%
26	Rabu	26 Mei 2021	0	0%	0	0%	0	0%	0	0%
27	Kamis	27 Mei 2021	0	0%	0	0%	0	0%	0	0%
28	Jumat	28 Mei 2021	0	0%	0	0%	0	0%	0	0%
29	Sabtu	29 Mei 2021	0	0%	0	0%	0	0%	0	0%
30	Minggu	30 Mei 2021	0	0%	0	0%	0	0%	0	0%
31	Senin	31 Mei 2021	0	0%	0	0%	0	0%	0	0%
JUMLAH			13		8		10		10	

SURVEI HARIAN MEJA INFORMASI



Panmud Hukum,

HARLY M. SIMANJUNTAK, SH.
NIP. 19761001 200112 1 002

Petugas Survei,

KRISTA, SH.
NIP. 19850614200604 2 001

Mengetahui:

Panitera Pengadilan Tinggi Palangka Raya,

SULAIMAN, SH., MH.
NIP. 19600322 198203 1 004

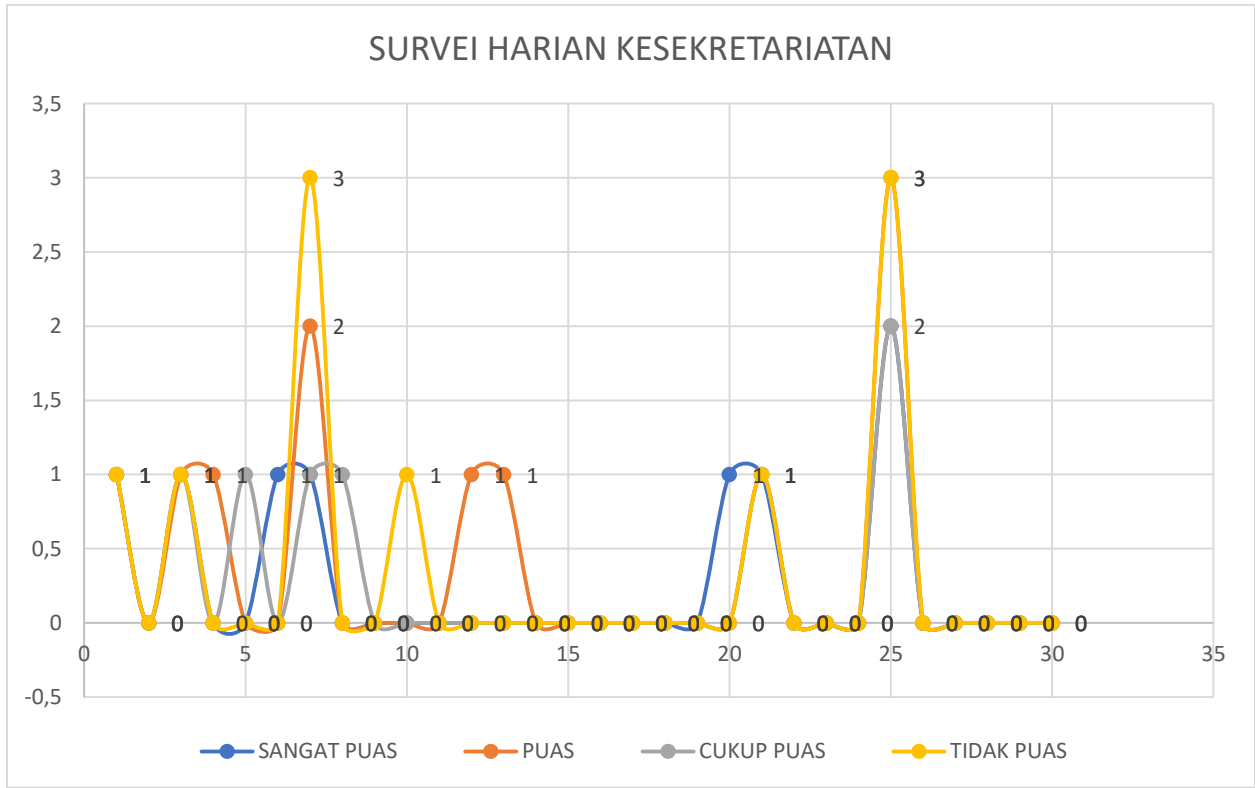


PENGADILAN TINGGI PALANGKA RAYA

JL. RTA MILONO NO. 9 TELP. 3221853 – 3221854 FAX. 3221854
Website : <http://www.pt-palangkaraya.go.id>, e-mail : pt_palangkaraya@yahoo.co.id
PALANGKA RAYA – KALIMANTAN TENGAH

LAPORAN SURVEI HARIAN KESEKRETARIATAN BULAN MEI TAHUN 2021

No.	Hari	Tanggal	FREKUENSI							
			SANGAT PUAS	%	PUAS	%	CUKUP PUAS	%	TIDAK PUAS	%
1	Sabtu	1 Mei 2021	1	25%	1	25%	1	25%	1	25%
2	Minggu	2 Mei 2021	0	0%	0	0%	0	0%	0	0%
3	Senin	3 Mei 2021	1	25%	1	25%	1	25%	1	25%
4	Selasa	4 Mei 2021	0	0%	1	100%	0	0%	0	0%
5	Rabu	5 Mei 2021	0	0%	0	0%	1	100%	0	0%
6	Kamis	6 Mei 2021	1	100%	0	0%	0	0%	0	0%
7	Jumat	7 Mei 2021	1	14%	2	29%	1	14%	3	43%
8	Sabtu	8 Mei 2021	0	0%	0	0%	1	100%	0	0%
9	Minggu	9 Mei 2021	0	0%	0	0%	0	0%	0	0%
10	Senin	10 Mei 2021	0	0%	0	0%	0	0%	1	100%
11	Selasa	11 Mei 2021	0	0%	0	0%	0	0%	0	0%
12	Rabu	12 Mei 2021	0	0%	1	100%	0	0%	0	0%
13	Kamis	13 Mei 2021	0	0%	1	100%	0	0%	0	0%
14	Jumat	14 Mei 2021	0	0%	0	0%	0	0%	0	0%
15	Sabtu	15 Mei 2021	0	0%	0	0%	0	0%	0	0%
16	Minggu	16 Mei 2021	0	0%	0	0%	0	0%	0	0%
17	Senin	17 Mei 2021	0	0%	0	0%	0	0%	0	0%
18	Selasa	18 Mei 2021	0	0%	0	0%	0	0%	0	0%
19	Rabu	19 Mei 2021	0	0%	0	0%	0	0%	0	0%
20	Kamis	20 Mei 2021	1	100%	0	0%	0	0%	0	0%
21	Jumat	21 Mei 2021	1	25%	1	25%	1	25%	1	25%
22	Sabtu	22 Mei 2021	0	0%	0	0%	0	0%	0	0%
23	Minggu	23 Mei 2021	0	0%	0	0%	0	0%	0	0%
24	Senin	24 Mei 2021	0	0%	0	0%	0	0%	0	0%
25	Selasa	25 Mei 2021	2	20%	3	30%	2	20%	3	30%
26	Rabu	26 Mei 2021	0	0%	0	0%	0	0%	0	0%
27	Kamis	27 Mei 2021	0	0%	0	0%	0	0%	0	0%
28	Jumat	28 Mei 2021	0	0%	0	0%	0	0%	0	0%
29	Sabtu	29 Mei 2021	0	0%	0	0%	0	0%	0	0%
30	Minggu	30 Mei 2021	0	0%	0	0%	0	0%	0	0%
31	Senin	31 Mei 2021	0	0%	0	0%	0	0%	0	0%
JUMLAH			8		11		8		10	



Panmud Hukum,

HARLY M. SIMANJUNTAK, SH.
NIP. 19761001 200112 1 002

Petugas Survei,

KRISTA, SH.
NIP. 19850614200604 2 001

Mengetahui:

Panitera Pengadilan Tinggi Palangka Raya,

SULAIMAN, SH., MH.
NIP. 19600322 198203 1 004



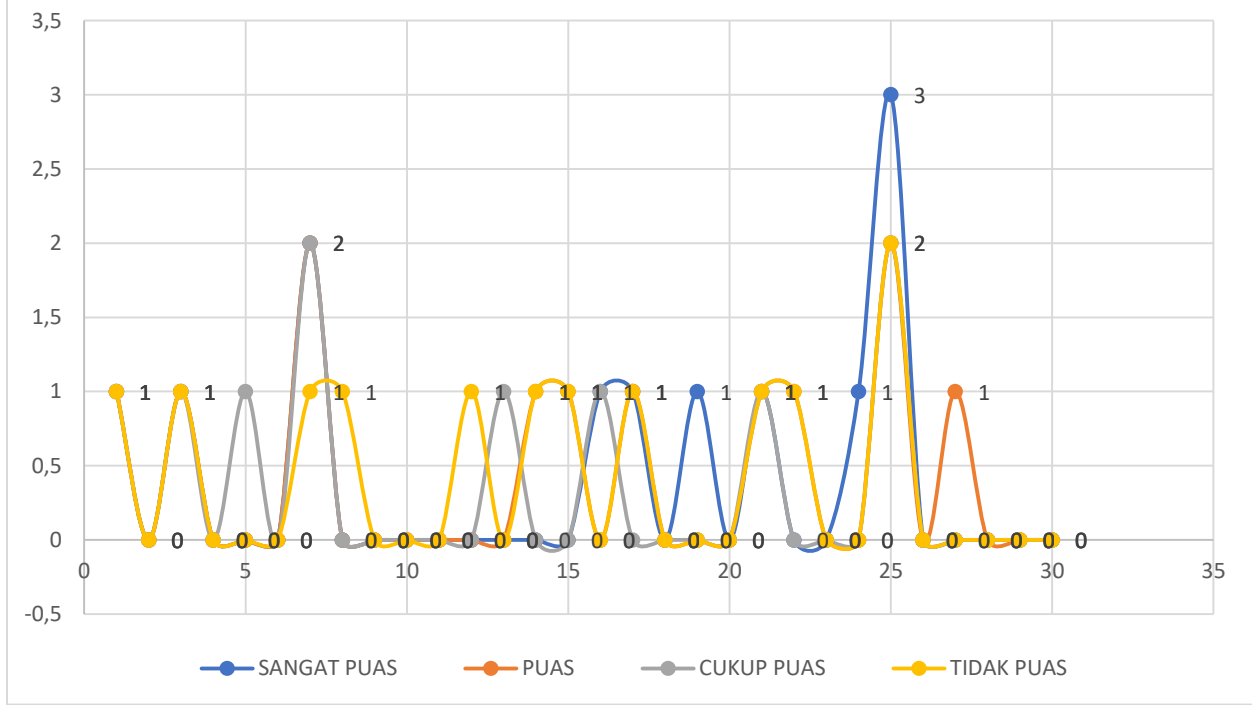
PENGADILAN TINGGI PALANGKA RAYA

JL. RTA MILONO NO. 9 TELP. 3221853 – 3221854 FAX. 3221854
Website : <http://www.pt-palangkaraya.go.id>, e-mail : pt_palangkaraya@yahoo.co.id
PALANGKA RAYA – KALIMANTAN TENGAH

LAPORAN SURVEI HARIAN KEPANITERAAN BULAN MEI TAHUN 2021

No.	Hari	Tanggal	FREKUENSI							
			SANGAT PUAS	%	PUAS	%	CUKUP PUAS	%	TIDAK PUAS	%
1	Sabtu	1 Mei 2021	1	25%	1	25%	1	25%	1	25%
2	Minggu	2 Mei 2021	0	0%	0	0%	0	0%	0	0%
3	Senin	3 Mei 2021	1	25%	1	25%	1	25%	1	25%
4	Selasa	4 Mei 2021	0	0%	0	0%	0	0%	0	0%
5	Rabu	5 Mei 2021	0	0%	0	0%	1	100%	0	0%
6	Kamis	6 Mei 2021	0	0%	0	0%	0	0%	0	0%
7	Jumat	7 Mei 2021	2	29%	2	29%	2	29%	1	14%
8	Sabtu	8 Mei 2021	0	0%	0	0%	0	0%	1	100%
9	Minggu	9 Mei 2021	0	0%	0	0%	0	0%	0	0%
10	Senin	10 Mei 2021	0	0%	0	0%	0	0%	0	0%
11	Selasa	11 Mei 2021	0	0%	0	0%	0	0%	0	0%
12	Rabu	12 Mei 2021	0	0%	0	0%	0	0%	1	100%
13	Kamis	13 Mei 2021	0	0%	0	0%	1	100%	0	0%
14	Jumat	14 Mei 2021	0	0%	1	50%	0	0%	1	50%
15	Sabtu	15 Mei 2021	0	0%	1	50%	0	0%	1	50%
16	Minggu	16 Mei 2021	1	50%	0	0%	1	50%	0	0%
17	Senin	17 Mei 2021	1	33%	1	33%	0	0%	1	33%
18	Selasa	18 Mei 2021	0	0%	0	0%	0	0%	0	0%
19	Rabu	19 Mei 2021	1	100%	0	0%	0	0%	0	0%
20	Kamis	20 Mei 2021	0	0%	0	0%	0	0%	0	0%
21	Jumat	21 Mei 2021	1	25%	1	25%	1	25%	1	25%
22	Sabtu	22 Mei 2021	0	0%	1	50%	0	0%	1	50%
23	Minggu	23 Mei 2021	0	0%	0	0%	0	0%	0	0%
24	Senin	24 Mei 2021	1	100%	0	0%	0	0%	0	0%
25	Selasa	25 Mei 2021	3	33%	2	22%	2	22%	2	22%
26	Rabu	26 Mei 2021	0	0%	0	0%	0	0%	0	0%
27	Kamis	27 Mei 2021	0	0%	1	100%	0	0%	0	0%
28	Jumat	28 Mei 2021	0	0%	0	0%	0	0%	0	0%
29	Sabtu	29 Mei 2021	0	0%	0	0%	0	0%	0	0%
30	Minggu	30 Mei 2021	0	0%	0	0%	0	0%	0	0%
31	Senin	31 Mei 2021	0	0%	0	0%	0	0%	0	0%
JUMLAH			12		12		10		12	

SURVEI HARIAN KEPANITERAAN



Panmud Hukum,

HARLY M. SIMANJUNTAK, SH.
NIP. 19761001 200112 1 002

Petugas Survei,

KRISTA, SH.
NIP. 19850614200604 2 001

Mengetahui:

Panitera Pengadilan Tinggi Palangka Raya,

SULAIMAN, SH., MH.
NIP. 19600322 198203 1 004